

A man with a beard and short dark hair, wearing a grey long-sleeved shirt and grey work gloves, holds a large, silver brake disc in front of his chest. He is looking upwards and to the left. The background is a gradient of light blue and white. The brake disc has a central hub with eight mounting holes and a large central opening.

BRAKING SOLUTIONS

CHASSIS

Delphi

delphiaftermarket.com





VEHICLE
ELECTRONICS



GASOLINE
FUEL SYSTEMS



WORKSHOP
SOLUTIONS



DIESEL
FUEL SYSTEMS



CHASSIS



STARTERS
& ALTERNATORS

THE COMPLETE AFTERMARKET SOLUTION



WE'VE GOT YOUR BACK...

Introducing our **unbeatable solution** for **braking!** We pride ourselves on providing one of the most **comprehensive ranges** in the market. From **pads, discs, shoes, drums**, and more, **we've got you covered.**

But that's not all. At Delphi, we take **innovation** seriously. Thanks to our **forward-thinking approach**, we are proud to offer the **latest technologies** in the industry, including **EV pads**. With these **cutting-edge advancements**, you can trust that your vehicle's braking system will be equipped with the most **advanced** and **efficient** components available.

Don't compromise on **quality**, choose **Delphi** for **reliable, top-quality products** that will keep your vehicle running **smoothly** and **safely**. **Trust Delphi to provide the solutions you need for all your braking needs.**





PRECISION FOR MECHANICS PERFORMANCE FOR DRIVERS

#1 COVERAGE

350+ new SKUs in 2025 for top leading braking coverage!

FIRST-TO-MARKET

Stay ahead of the game with **70+ first-to-market** by the end of 2024

ELECTRIFICATION PARTNER

Brake pads designed specifically for **electric vehicles**

WORKSHOP SOLUTIONS

From diagnostics to tech support...
...We've got your back!



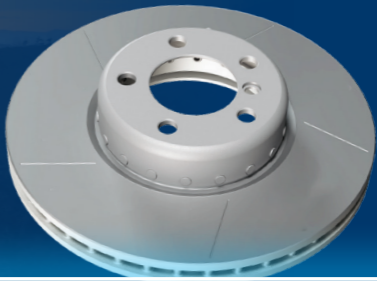
FIRST-TO-MARKET BRAKING

+70 BY END OF 2024



BRAKE PADS

KIA EV9 | **HONDA** JAZZ, CIVIC | **MERCEDES** CLE200, CLE220, C, CLE, E, GLC, EQE, EQS, CITAN, T-CLASS, C-CLASS 43 AMG | **TOYOTA** COROLLA, C-HR | **GENESIS** GV60 | **MITSUBISHI** COLT | **NISSAN** ARIYA, X-TRAIL
AUDI SPORTBACK | **PORSCHE** CAYENNE | **JEEP** GRAND CHEROKEE | **LAND ROVER** RANGE ROVER, RANGE ROVER SPORT | **MAZDA** CX-60 | **TESLA** MODEL S, MODEL X, MODEL 3 | **FORD** TOURNEO COURIER, TRANSIT COURIER | **HYUNDAI** STARIA, KONA



BRAKE DISCS

HONDA HR-V, CIVIC | **FORD** TRANSIT 500, RANGER | **HYUNDAI** ELANTRA, STARIA | **MG** ZS | **TOYOTA** GR YARIS
KIA NIRO | **MERCEDES** CITAN, T-CLASS | **FIAT** DOBLO | **TESLA** MODEL Y
JEEP GRAND CHEROKEE | **VOLVO** EX30



BRAKE SHOES

VOLKSWAGEN AMAROK | **AUDI** Q4 SPORTBACK | **PORSCHE** CAYENNE | **MITSUBISHI** ASX, COLT

TESLA | KIA | VOLKSWAGEN | HONDA
MERCEDES | PORSCHE | FORD | JEEP
NISSAN | AUDI | HYUNDAI | TOYOTA
SSANGYONG | MAZDA | GENESIS | MG



Continuous upgrades to meet and exceed OE to always have the most up-to-date parts, improving vehicle performance and safety

Accessories included as per OE specifications to save time and ensuring a perfect fit during installation

With over 40 available friction materials, we match each vehicle's specific requirements to improve performance and enhance driver satisfaction

Copper-free and 'N' level in 99% of our brake pads to achieve the highest standards of environmental compliance

Reduced environmental impact: 10 tons of plastic saved on pads packaging

COMPLETE PRODUCT SOLUTION PADS



Our **brake pads**, crafted from **advanced materials**, deliver **outstanding stopping power, durability**, and **low noise**. With the **best coverage** in the market, they ensure **consistent, reliable performance** for every drive. We are committed to providing **premium-quality brake pads** that not only keep your **customers satisfied** but also build **lasting loyalty** and **drive repeat business**. Our products are designed with **sustainability** in mind, reflecting our **dedication** to **environmentally responsible practices**. **Partner with us** to leverage the **latest braking technologies** and **grow your business**.

ELEVATE YOUR SKILLS WITH THE **DELPHI EXPERTS HERE BY VISITING THE MASTERS OF MOTION HUB NOW!**



HOW-TO BED-IN
BRAKE PADS ON A
TESLA MODEL S



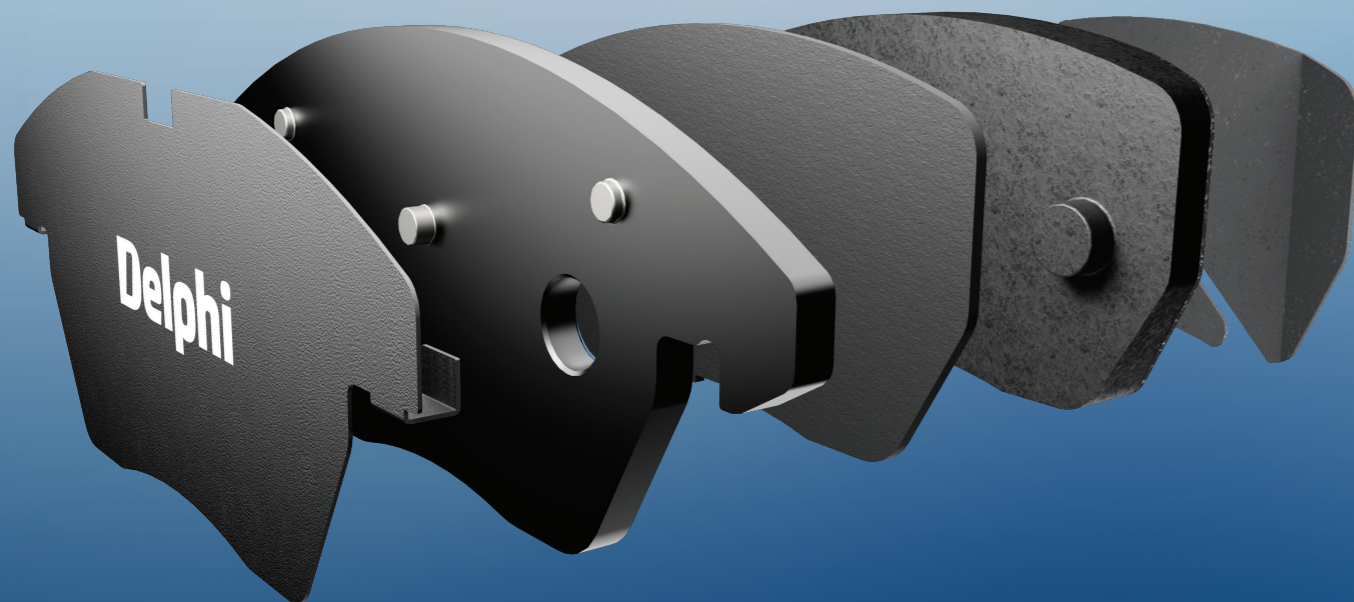
HOW-TO CHANGE A
REAR BRAKE PAD ON AN
ELECTRIC PARKING BRAKE



HOW-TO REPLACE
FRONT DISCS &
BRAKE PADS



WE CALL IT DELPHI'S 5 LAYERS OF QUALITY



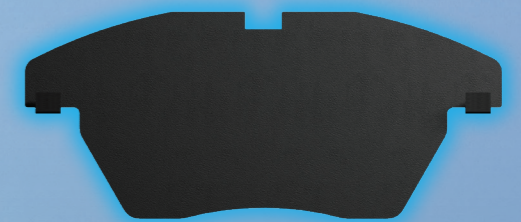
Contributing to a large part of the vehicle's stopping power, **brake pads** are one of the most important components in the braking system - so when it comes to quality, there can be **no compromise**.

As a **leading braking manufacturer**, our pads are **designed, manufactured and tested** for outstanding performance.

Discover Delphi's "**Five Layers of Quality**" built into every one of our pads.

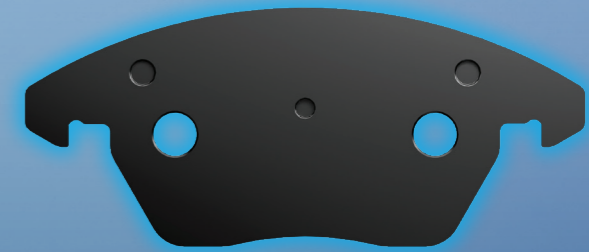
SHIMS

The finely tuned layers of OE dampening material help to reduce the transmission and amplitude of vibration and provide a thermal barrier for more consistent braking.



BACK PLATES

The backbone of every pad, our backing plates are manufactured from a high-strength pressed steel and coated in a special powder for improved protection, installation and pressure transmission.



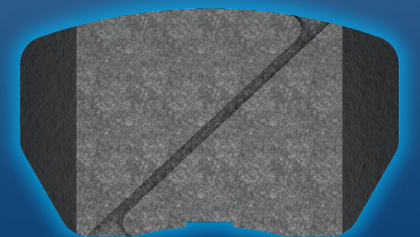
UNDER LAYER

The 3mm layer of OE under layer technology in all our pads absorbs noise and acts as a thermal insulator, reducing heat transfer to the brake fluid.



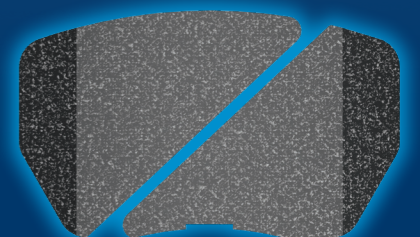
FRICTION MATERIAL

We use over 130 different friction ingredients to create unique formulations, each designed to ensure the best match of pad to vehicle application.



FRICTION SURFACE

Our OE configured chamfers, help shorten bedding in, and reduce initial squeal, for OE performance from day one. Additional slots allow the pad to flex, preventing stress cracks.



BREAKING NEW GROUND WITH DELPHI EV PADS

UNMATCHED QUALITY

Safety, quality, and performance go hand in hand. The **Delphi EV brake pads** feature an **advanced coating** to deliver **optimal initial friction performance**. The result? **Immediate** and **reliable braking power** that ensures **safety** and **efficiency** from the first use.

DURABLE DESIGN

Brakes degrade over time, but we've come up with an **innovative solution** to extend the lifespan of our **EV pads**—whatever the driving conditions. The **silver powder-coated backplate** protects each pad from **rust**, maintaining the **integrity** and **performance** of the **brake system** over time.

QUIET AND SMOOTH OPERATION

Electric vehicles are whisper quiet. Our **EV brake pads** enhance this driving experience by **further reducing noise** and **vibration**. We use a **unique multi-layered composition** of **steel** and **rubber** within the **shim** to enable a **comfortable drive** and **stable, responsive braking**.

SUSTAINABILITY MEETS PERFORMANCE

We are **committed** to delivering **sustainable products without compromising quality or performance**. That's why we're proud that our **EV brake pads**, like **99%** of our range, have earned the **AASA Leafmark™ 'N' rating**. This means they **contain less than 0.5% copper**, are **heavy-metal free**, and **eco-friendly**—resulting in **durable, low-dust pads** that are better for the environment.

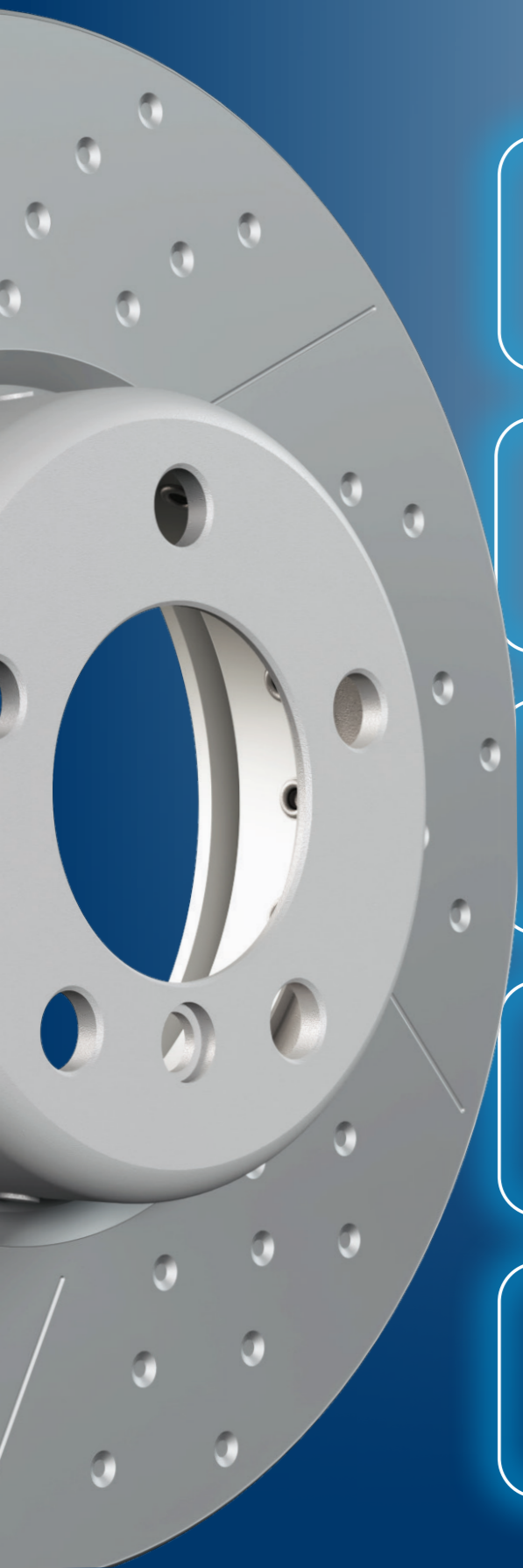
READY-TO-INSTALL

Our **EV brake pads** come **ready-to-install**. Each set includes all necessary **hardware**, including **abutment clips**, **caliper bolts** with the **correct thread lock**, **electronic wear leads**, and a **grease sachet**. A convenient and hassle-free installation **saves time**, **empowering technicians** to provide **exceptional service faster**.

Delphi EV brake pads stand at the forefront of **electric vehicle technology**. Manufactured to exact **OE tolerances**, they provide unparalleled **braking performance** right out of the box.

Discover the three must-know differences in EV brakes - watch the video now!





Continuous alignment with OE changes and improvements, keeping you updated with the latest specifications

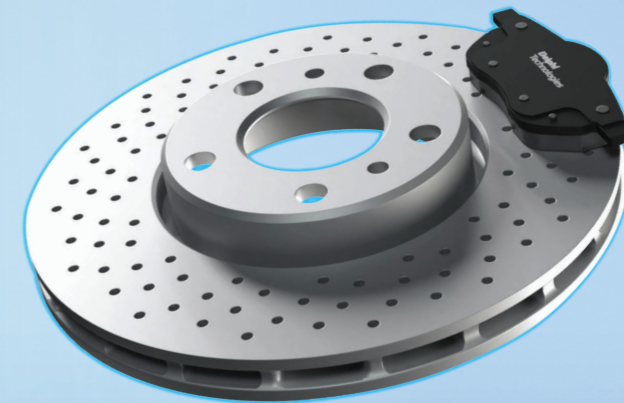
Fixing screws included to aid installation process, saving time and ensuring secure mounting

100% balanced to ensure smooth driving without vibrations and reduce installation issues

Exceptional rust protection, proven by independent salt spray testing

Reduced environmental impact: 26 tons of cardboard saved annually with consolidation & optimisation projects

COMPLETE PRODUCT SOLUTION DISCS



Our **brake discs** are **built to last** and **perform**. They're designed to handle **heat**, **reduce wear**, and deliver **reliable braking power**. Fit for a **wide range** of **vehicles**, our **discs** help cut down on **noise** and **vibrations**, making every drive smoother. Count on us for a **dependable product** that's all about **quality** and **durability**.

ELEVATE YOUR SKILLS WITH THE **DELPHI EXPERTS HERE BY VISITING THE MASTERS OF MOTION HUB NOW!**



HOW-TO REPLACE
PADS & DISCS ON
A TESLA MODEL S



HOW-TO DIAGNOSE
WARPED
BRAKE DISCS

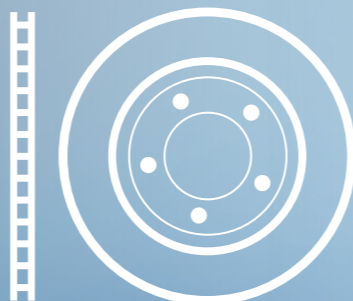


COMPLETE PRODUCT SOLUTION

DISCS

VENTED DISCS

Feature special internal cooling passages to maximise airflow, improving cooling capacity and resistance to thermal cracking



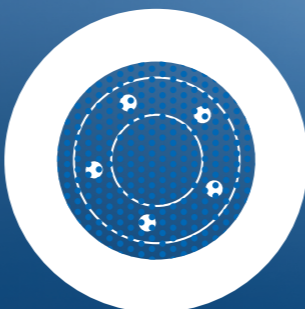
CROSS-DRILLED DISCS

Additional axial holes improve braking response in the wet, and dissipate heat, dust and gases, reducing the risk of thermal distortion, warping and brake fade.



HIGH-CARBON DISCS

The higher carbon and silicon content reduces the risk of thermal cracking under high-temperature loads, distortion and noise



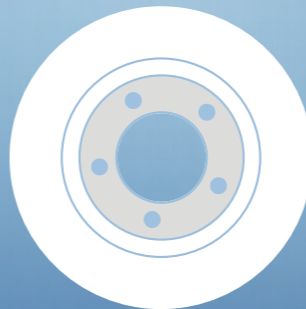
COATED DISCS

Special zinc-flake, silver coating across the entire surface, offers proven, longer-lasting corrosion protection. With no oil to clean off, they are easier and quicker to fit too



BI-METALLIC DISCS

Reduced weight, improved performance and better fuel economy matching OE specification



DISCS WITH BEARINGS

Includes safety critical components already pre-mounted for quick and accurate installation



We offer a **wide range** of **brake discs** to ensure you have all the options needed to cover the **entire car parc**.

Whatever the **vehicle type**, **we've got you covered** with the right discs for **reliable performance** and **quality**.





Our brake drums use high-quality, heat-conductive materials to withstand stress, improve durability, and prevent overheating for safer driving

Delphi brake drums offer top braking performance with less noise and vibration. They are marked for easy servicing and quick identification of worn parts

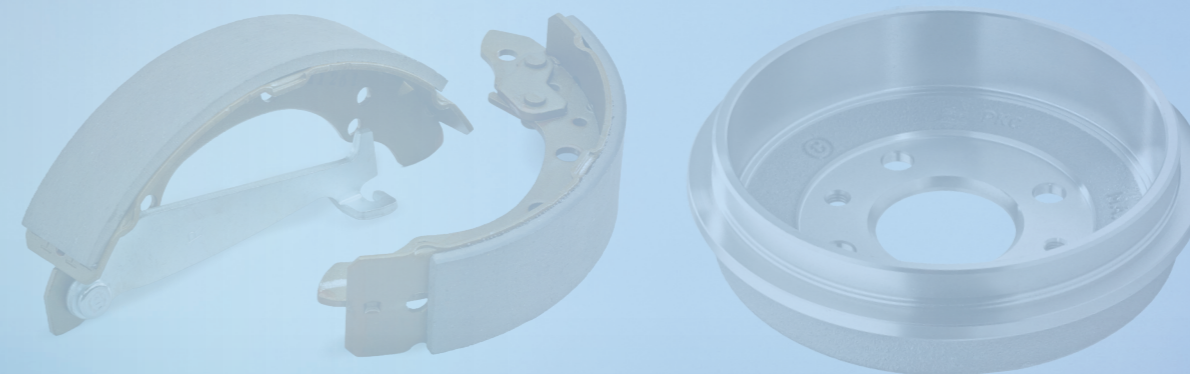
We provide drum and shoe kits in various formats, plus essential hydraulic parts, ensuring quick, accurate repairs and labor savings

Our brake shoes have OE-matching components for a perfect fit and are coated to resist rust, extending the lifespan of shoes and drums.

With OE-standard materials and full adhesive bonding, our shoes offer strong friction and instant brake performance, with no bedding-in needed



COMPLETE PRODUCT SOLUTION DRUMS & SHOES



Our **brake drums** and **shoes** are **designed for quality, performance, and easy maintenance**. Made from **high-quality, heat-conductive materials**, our drums **withstand stress, enhance durability, and prevent overheating for safer driving**. They deliver **quiet, reliable braking** with markings for **quick identification** and **easy servicing**. Paired with **OE-matching brake shoes** that **resist rust** and offer **instant performance** with **no bedding-in** required, our drum and shoe kits ensure **efficient, best-practice repairs** with **significant labor savings**.



CHECK OUT OUR HOW-TO **VIDEOS** BY VISITING THE **MASTERS OF MOTION HUB NOW!**





OE quality rubber seals and caps to prevent leaks and protect pistons of our cylinders from dirt and water contaminations

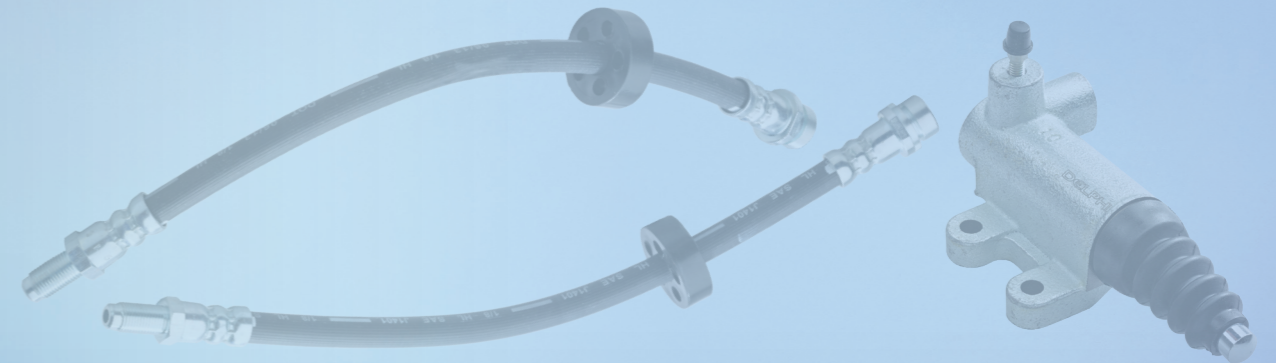
Strict tolerances in manufacturing process to provide quality and consistent performance in various driving conditions

Enhanced rubber material with zinc coated anti-corrosive end fittings to provide to our hoses high flexibility, strength and durability

Hoses specially designed to expand less, even at high braking pressure, for a more consistent pedal feel and greater responsiveness

Extensive testing including 100% leak, as well as pressure to 3000 psi minimum, burst, fluid displacement, tensile strength and more

COMPLETE PRODUCT SOLUTION HOSES & CYLINDERS (HYDRAULICS)



Discover **unmatched precision** and **performance** with our **high-quality hydraulic brake components**, including **durable hoses** and **precision-engineered cylinders**. Our **brake hoses** are designed for **flexibility** and **long-lasting performance**, while our **cylinders** ensure **efficient brake fluid transfer** for **optimal braking response**. These components provide **reliable** and **safe braking solutions** that meet the highest industry standards.

ELEVATE YOUR SKILLS WITH THE **DELPHI EXPERTS HERE BY VISITING THE MASTERS OF MOTION HUB NOW!**



HOW-TO CHECK & TEST
BRAKE FLUID



HOW-TO CHANGE
BRAKE FLUID ON A TESLA





Compatible with over 260 million vehicles, our ABS sensors offer one of the most comprehensive ranges in the market

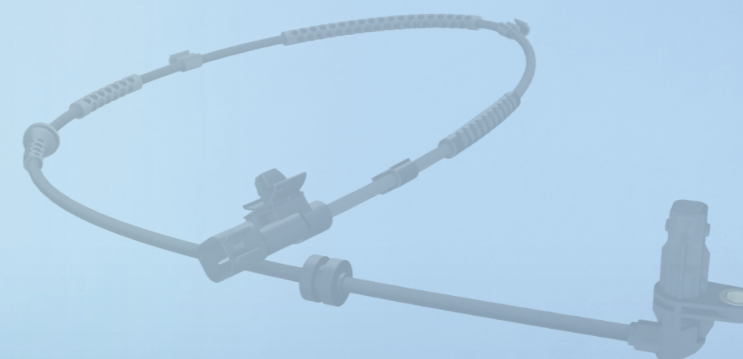
70+ parts engineered specifically for hybrid and electric vehicles (EVs)

Rigorous testing: 100 hours at 150°C in SCU testing - showcasing extended lifespan and minimal maintenance needs

Operate between -40°C and 850°C, guaranteeing sensor functionality in harsh environments

Utilises weather-pack connectors to repel dirt, moisture and other contaminants, protecting against corrosion with plated pins

COMPLETE PRODUCT SOLUTION ABS SENSORS



ABS sensors play a crucial role in **vehicle safety** by **preventing wheel lock-up** during braking. These sensors **monitor the speed** of each wheel and send this information to the **ABS Control Unit**. When the system detects that a wheel is about to lock up, it modulates the brake pressure to maintain traction and control. **Accuracy** and **reliability** is paramount with this **safety critical** part and **Delphi** put their **OE expertise** into ensuring that their range of **ABS sensors** provide an accurate reading in the **harshest of environments**.

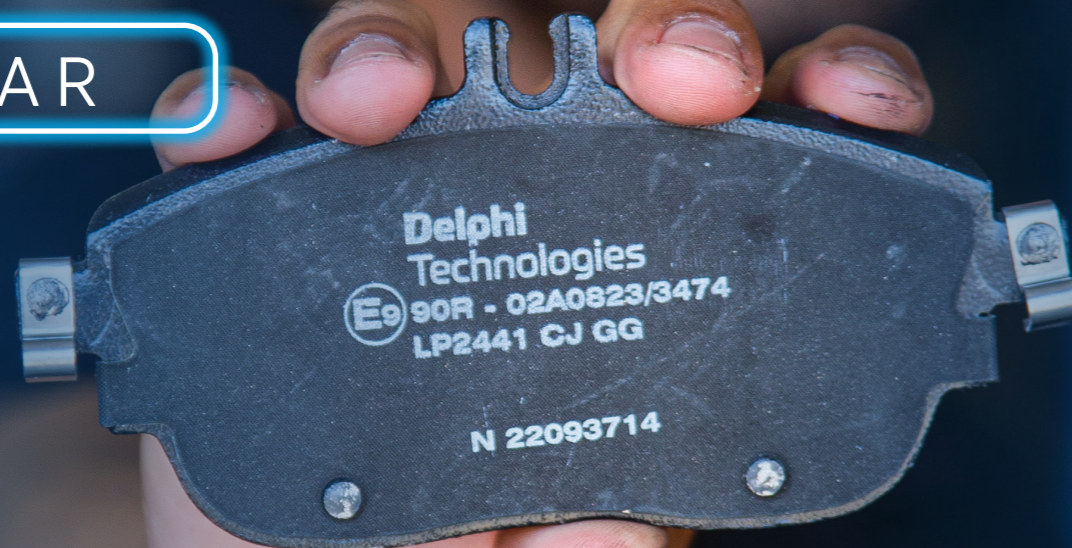


CHECK OUT HOW-TO REPLACE AN **ABS SENSOR** WITH THE **DELPHI EXPERTS HERE BY VISITING THE MASTERS OF MOTION HUB NOW!**



OE INDEPENDENT BRAKE TESTING

IN MOJÁCAR



WHAT WE DID...

Independent testing is vital in the automotive world. It's the cornerstone of credible automotive research and development. It eliminates potential biases that may arise when tests are conducted internally by manufacturers. Independent testers have no stake in the outcome, ensuring that the **results are objective** and that the **best interests** of **consumers** and the **environment** are kept at the forefront.

DUST TESTING



PEDAL RESPONSE TESTING



NOISE TESTING



In the sunny and consistent climate of **Mojacar**, Spain, Delphi's latest brake pads recently underwent **rigorous testing** by an independent company. The conditions were ideal: **over 3,180 hours** of sunshine each year and very little rainfall to affect the results. Here, **Delphi's brake pads** were put to the test against other **premium brands**. The goal was clear: to see which pads could deliver not just in **performance** but also in **environmental responsibility**.



CLEAN BRAKES FOR A CLEAN ENVIRONMENT

For the dust test, vehicles cruised 4,000 kilometres on dry roads, avoiding any interference from rain or surface water. This consistency was key to ensuring that the dust collected was solely from the brake pads.

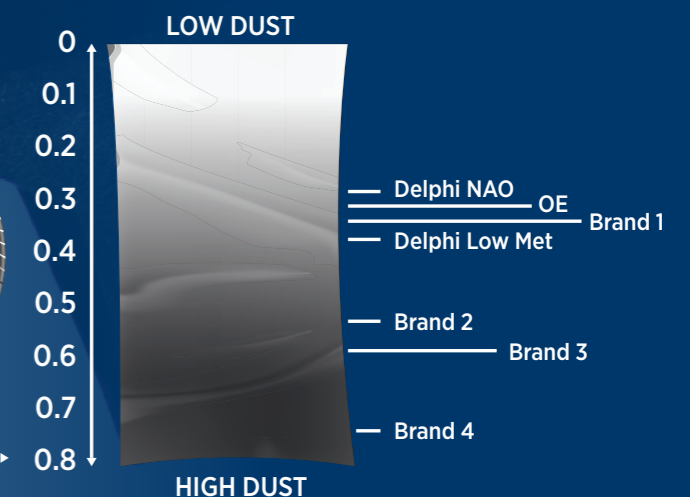
MOJACAR
SPAIN

210 MINS

4,000 KM



Illustrative example of rear
pad test results: 3,600KM



The vehicles, driven in a convoy, took on a **200km circuit** that combined the challenges of **mountainous** and **urban driving**, each loop taking **210 minutes** to complete. Over **ten days**, each car completed **two circuits daily**, ensuring a thorough and exhaustive test of the **brake pads' dust emissions**.

Delphi's NAO pad emerged superior, surpassing other premium brands and the OE in **dust emission tests**. Less brake dust means less wear on the brakes and, importantly, fewer particles released.

Delphi low metallic (low met) pads also outperformed. In comparison to some premium brands, Delphi's low met pads produced **half the amount** of dust, placing them at the **forefront in terms of efficiency**.

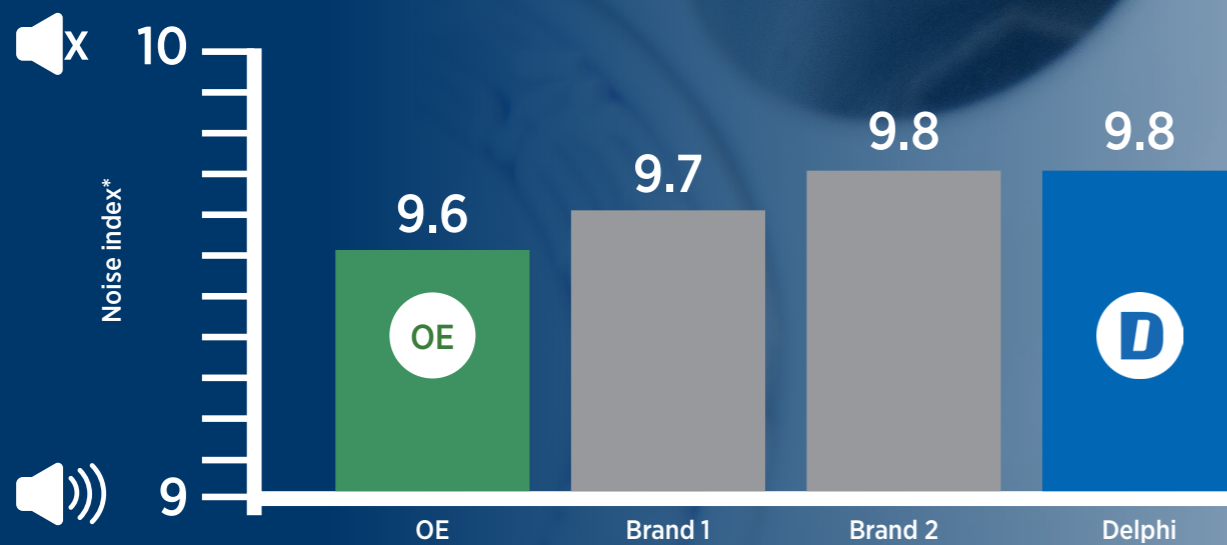
Brake dust is more than just an aesthetic concern for vehicle owners; it's a **significant environmental issue**. As brake pads wear down, they release particulate matter into the air. This **dust can affect air quality** and has been a focus of **environmental regulations**. This result also translates to **cost savings** for consumers while reducing the **volume of waste** and the need for manufacturing new components.

Moreover, **fewer particles** in the air mean a **lower impact** on **public health** and the **environment**, as brake dust has been linked to respiratory issues and other health concerns.



QUIET BRAKES FOR MAXIMUM COMFORT

In the **noise test**, **Delphi pads** achieved **top marks** for **quiet operation**, scoring a **9.8 noise index**, where 10 symbolises complete silence. This result **surpassed** the performance of both **IAM** and **OE** competitors.



*Noise index: 10 is silent, 1 is loud

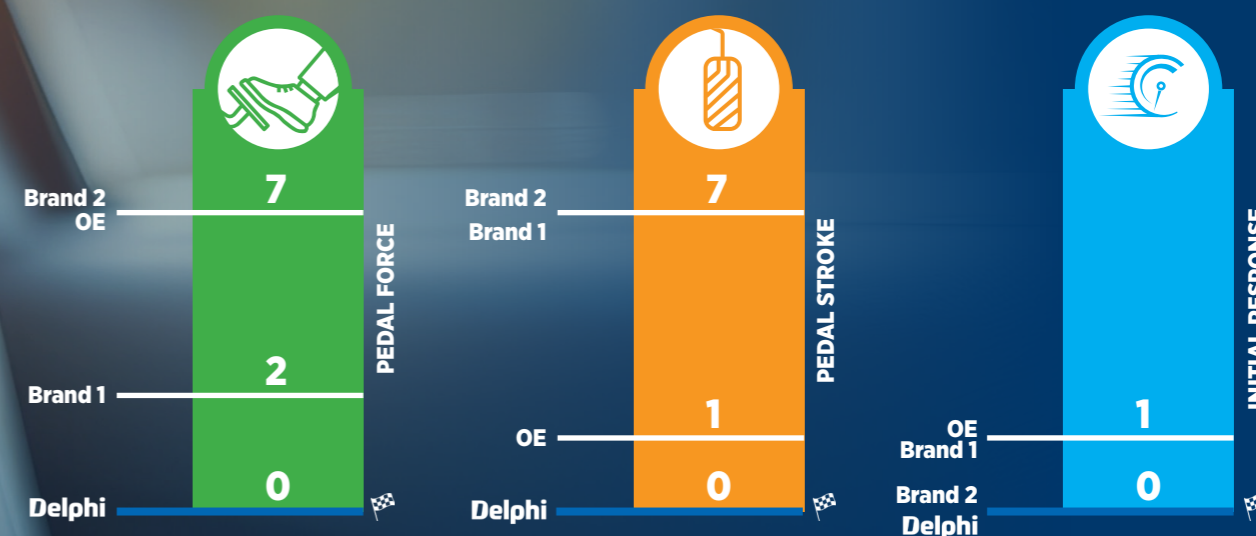
The **low noise levels** mean **reduced sound pollution**, contributing to a **quieter life inside** and **outside** the vehicle. For drivers, it translates to a **more relaxed driving environment**, lessening the **auditory stress** that often accompanies extended road travel.

It's not just humans who suffer from noise pollution either; **wildlife is also impacted**, with evidence showing that noise pollution can lead to physiological stress in caterpillars and disruptions in the behaviour and well-being of marine mammals. It interferes with animals' ability to navigate, find food, mate, and avoid predators, impacting their survival.



CONSISTENCY EQUALS SAFETY

The **brake pedal** is the driver's direct line to the vehicle's stopping power. When a driver presses the pedal, a certain response is expected: the **vehicle should decelerate at a predictable rate**.



NUMBERS INDICATES AMOUNT OF DEVIATIONS RECORDED BY THE DRIVERS.
ZERO DEVIATIONS = MAXIMUM CONSISTENCY

Consistency in this response is **crucial**. It means that no matter the situation—whether you're stopping for a red light on a sunny day or braking suddenly to avoid an obstacle—the feel of the pedal underfoot remains the same, **predictable** and **reliable**.

Delphi's brake pads were put to the test by independent professional drivers skilled in detecting even the slightest variation in brake pedal feel. Compared to competitors, Delphi had the **most consistent results**. Achieving **zero deviation** is significant—it indicates that every time the brake pedal was engaged, it felt exactly the same to the driver. There were **no surprises**, **no changes** in **resistance**, and **no delays** in **response**. This consistency is a cornerstone of **driver safety**, as it allows drivers to build muscle memory and an intuitive understanding of their vehicle's braking behaviour.

Forward-Thinking Results

The tests in Mojacar offer a glimpse into the future of **automotive safety** and **environmental responsibility**. With meticulous planning and execution, the results showcase **Delphi's braking products** as a benchmark for **quality** and **sustainability**.



COMPLETE PRODUCT SOLUTION WORKSHOP SOLUTIONS

TRAINING

Elevate your skills, anywhere, anytime!

- Delphi offer a 'face to face' fundamentals **braking course (BR1)** in multiple countries (UK, Poland etc.)
- Delphi offer **1 hour** of **braking** content within the **online academy**

DIAGNOSTICS

Advanced hardware, extensive software and integrated technical data!

- In **software version 2024.00** we cover **all braking adjustments/calibrations** such as: **brake bleeding**, **handbrake electronic wind back**, **brake pressure sensor calibration** - across **54 brands!**
- We cover features such as **de-pressurising** the braking system ready for **brake pad replacement** (e.g. KIA)

CATALOGUING EXCELLENCE

Cataloguing excellence to guide you to the perfect part every time!

- Enhanced **x reference database**
- **360 images** for ease of identification
- **Premiere Tecdoc® Data supplier**

HOW-TO VIDEOS

Master every installation with our step-by-step how-to videos!

- One new video available every **Thursday**
- Content created **by technicians, for technicians**

TECHNICAL ARTICLES

Equipping technicians with informative tech articles!

- One new article available **every Monday**
- Staying up-to-date on **industry trends**, **best practices**, and **troubleshooting tips**



FOCUSED ON TODAY... THINKING ABOUT TOMORROW

As a result of the direct feedback from **4000 workshops** in the Delphi survey, we have developed an **interlinked learning** and **information roadmap** that supports workshops for **today's challenges**, and prepares them for **future vehicles** and **technologies**.

FREE-TO-VIEW

How-To video content published on free to view channels such as YouTube, and the Masters of Motion hub.

E-LEARNING

Powerful subscription-based platform covering 300+ training modules, extensive video content, a simulator, and much more.

FACE-TO-FACE

Training in a Delphi technical centre, combining theory and practical on-vehicle courses.

Created by technicians, for technicians.

MASTERS OF MOTION

10
COUNTRIES
RESEARCHED



4000
WORKSHOPS
SURVEYED



1000
HOURS OF
RESEARCH



Delphi

BRAKING SOLUTIONS

CHASSIS



delphiaftermarket.com

