



Delphi Technologies

Diagnostics

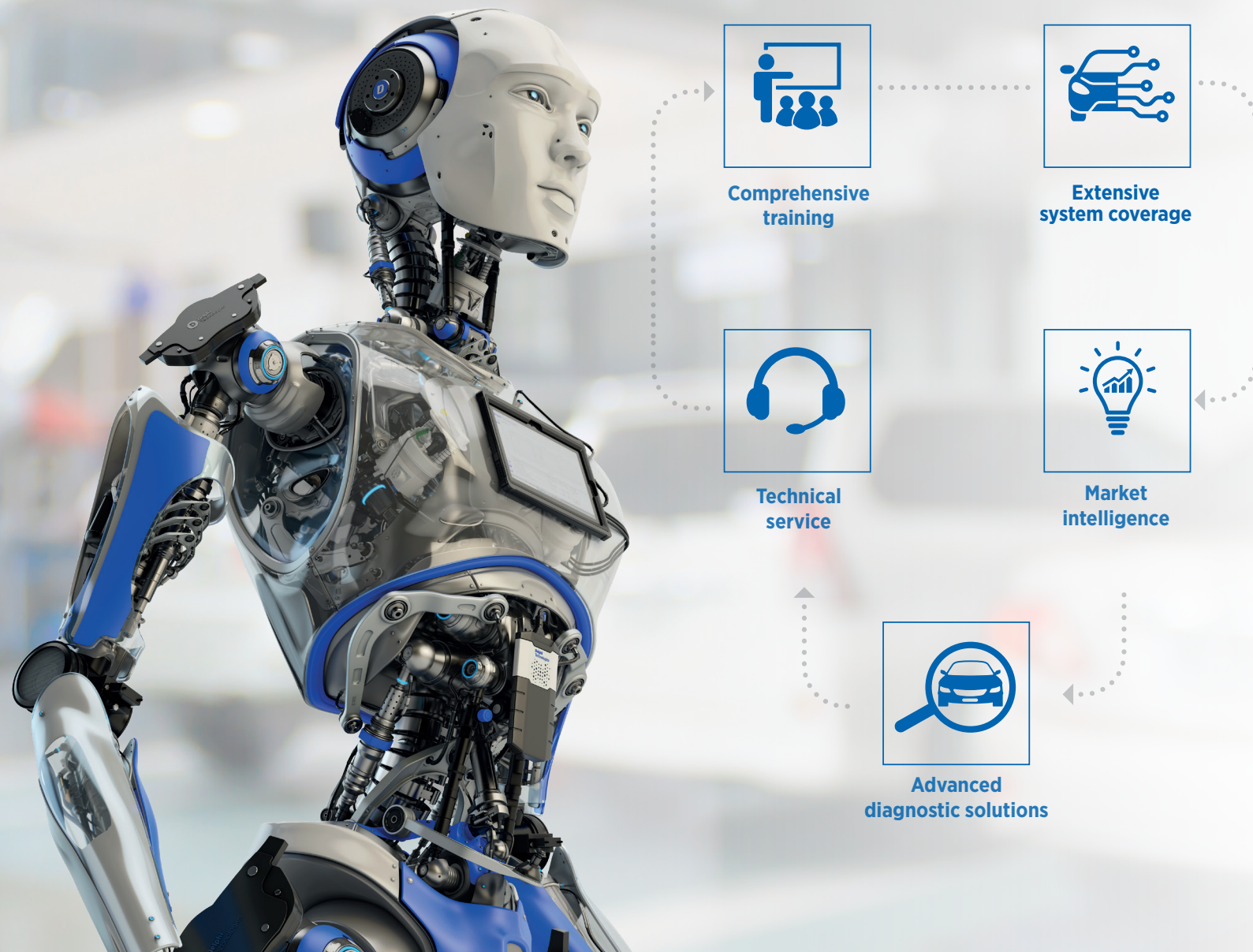
BlueTech VCI - DS180 / 480

Next generation diagnostics

Pioneering **product portfolio**



On vehicle electronic diagnostics Providing the full service solution



On-vehicle electronic diagnostics

The Delphi Technologies difference

Advanced diagnostic solutions

Intuitive solutions delivering professional diagnostics, ADAS calibration, pass-thru, and much more!



Perform the most complex jobs with ease

Comprehensive technical information

Vehicle technical information (VTI) combining essential repair data and technical drawings.



Everything you need, at your fingertips

Leading multi-sector coverage

Leading coverage for car, LCV, truck & bus applications and 16 key vehicle systems.



One hardware solution, multiple sectors covered

Advanced diagnostic solutions

Welcome to the next generation

We believe every workshop should have access to the best technology and functionality required to carry out the highest quality repairs. As pioneers of market-leading solutions, we have developed a new revolutionary and intuitive diagnostic solution called BlueTech.



Features

- WIFI & Bluetooth connectivity
- Passthru support
- Integrated DoIP
- CAN FD - 3 channels
- Unlock Security Gateway
- Remote diagnostic compatible
- VCI status indicator
- 360° view of multicolour indicator
- ... and much more!

The BlueTech VCI combines advanced hardware with extensive software to deliver a future-proof diagnostic solution, providing workshops the opportunity to maximize revenue and growth potential. Welcome to the BlueTech experience!

Advanced diagnostic solutions

The BlueTech experience

The BlueTech VCI offers a variety of intelligent capabilities, unique design and software overhaul for a more seamless and efficient diagnostic experience.

Workshops can enjoy expanded vehicle coverage, additional functionality, integrated training support and faster vehicle scan time to maximize productivity and to accelerate revenue and growth.



Advanced diagnostic solutions

The BlueTech VCI difference

The BlueTech VCI is an innovative, easy to use diagnostic tool providing workshops with an extensive suite of diagnostic interrogations, real world data, and more.

“By making various diagnostic features integrated where they weren’t before, we recognise workshops’ need to have these functions at the ready for more and more models that have advanced technology as standard.”
- Jean-François Bouveyron, Vice President EMEA, Delphi Technologies Aftermarket.



Flight recorder:
Perfect for a one-man road test. Select your parameters, hit “Record” and review when back in the workshop. With its 4 GB internal storage capability, enjoy even more space to record all the data you need.



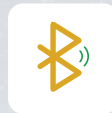
360° Multi colour indicator:
Lets you check the status of the VCI at any time from every angle and position.



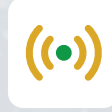
Universal:
VCI can be used for cars, light commercial vehicles, trucks, buses & coaches, trailers.



Battery voltage monitor:
Don't let a dead vehicle battery stop you working.



WIFI & Bluetooth connectivity to the PC:
Wireless communication providing freedom to work anywhere in the workshop, whilst maintaining a seamless connection to the vehicle.



Integrated DoIP:
No need of any DoIP adaptor cable. With its built-in functionality, the VCI can be plugged directly on DoIP communicating vehicles.



Pass-thru support:
Quick and easy access to OEM flash-programming services.



CAN FD channels
Future-proof design to make the diagnostic possible on vehicles requiring this data-communication protocol.

Advanced diagnostic solutions

Discover the BlueTech language

The new BlueTech VCI is designed from the ground up to meet the changing aftermarket world. The LED icon panel and matching colour coded surround lighting mean its operation is visible to the technician from almost any angle, ensuring it is quick and easy to see the status when connect to the vehicle.

WHITE LIGHT
VCI - ON



GREEN LIGHT
Communication with the vehicle



YELLOW LIGHT
Flight recorder ON



RED LIGHT
Vehicle battery voltage warning



LIGHT BLUE LIGHT
Communication with the PC/tablet



Advanced diagnostic solutions

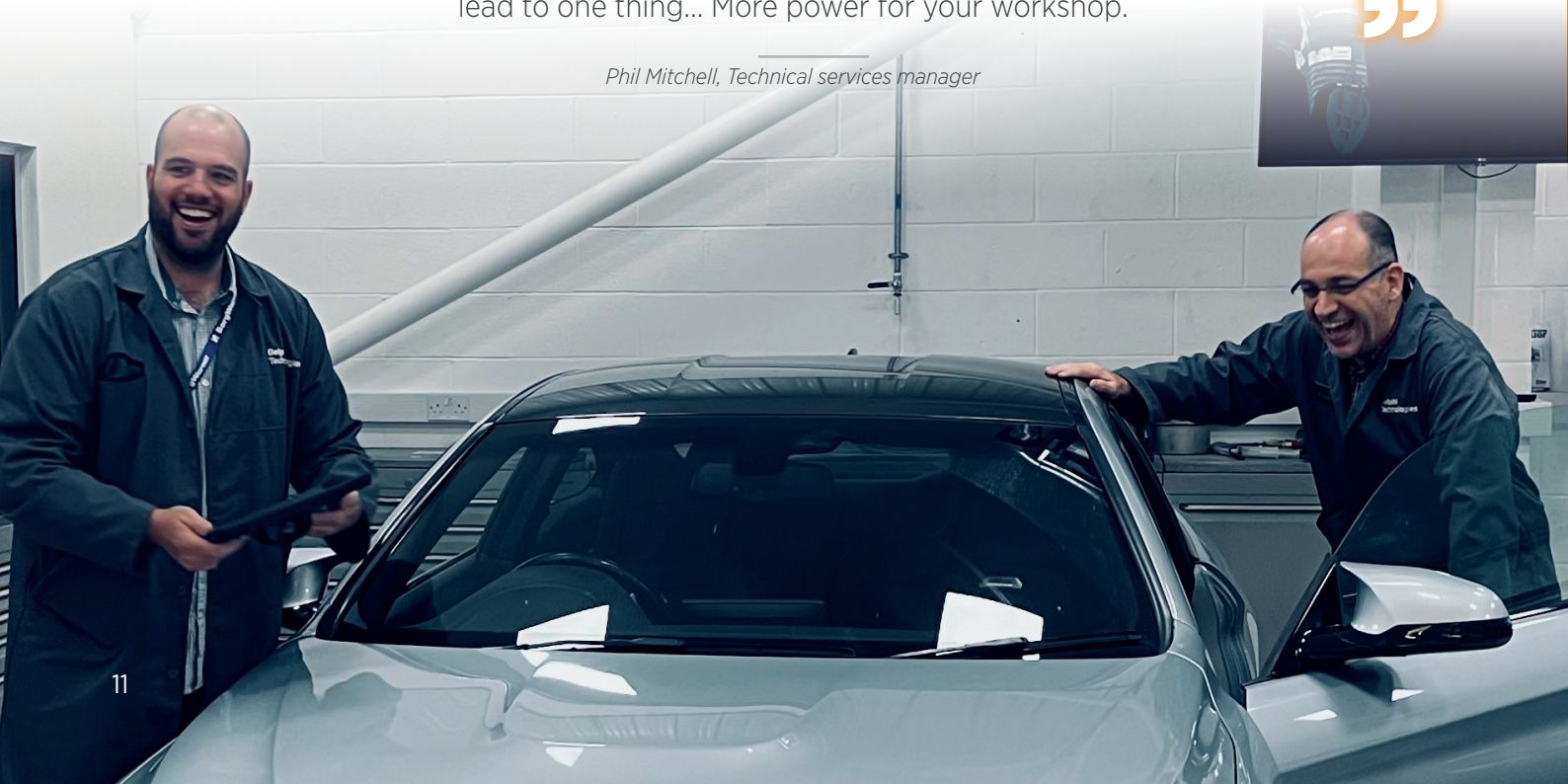
Hear it from the experts



The DS180 / 480 provides the technician with **enhanced diagnostic capabilities** from the start. Integrated **DOIP**, **security gateway**, and **passthru** are just the beginning. We are adding in more features like **enhanced trouble code assistance**, which not only guides you through fault finding, but actually displays expected **live data values on screen**.

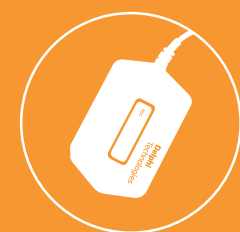
Thanks to our extensive database, will also provide you with a fault probability based of **1000's of aftermarket repairs**. The new **BlueTech VCI** hardware is 5x faster than the previous VCI, and all of this hardware and software enhancements lead to one thing... More power for your workshop.

Phil Mitchell, Technical services manager



Advanced diagnostic solutions

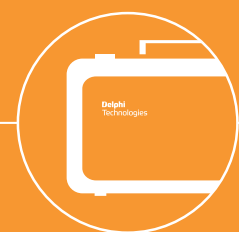
Straight out of the box



Delphi Technologies VCI (DS180 / 480)



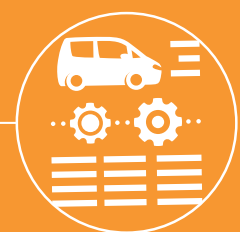
USB security dongle paired to VCI (DS180 / 480)



Kit carry case (DS180 / 480)



Rugged tablet with Windows 10 Pro - 10.1" (DS480 only)



Software can be purchased with a one, two or three year licence

Advanced diagnostic solutions

ADAS calibration

Delphi Technologies' commitment in offering the most advanced diagnostic solutions is reflected also in the multi-brand, modular Advanced Driver Assistance Systems (ADAS) equipment which delivers garages a cost-effective, flexible and accurate route into ADAS servicing.

The Delphi Technologies ADAS solution:



Easy storage
save storage space with removable half-bars



Double-sided target panels (OEM approved)
save space and money in the workshop



Adjustable equipment
designed to cover even the largest vehicles



Accurate positioning
calibrate the ADAS sensor with confidence



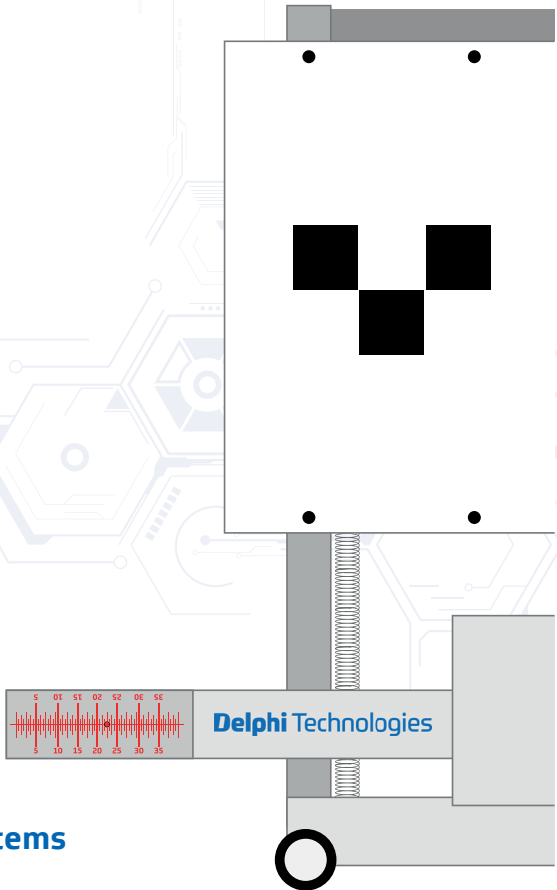
Single person operation
operate the equipment with only one pair of hands



Parallelism adjustment
fast, easy and accurate cross-bar adjustments

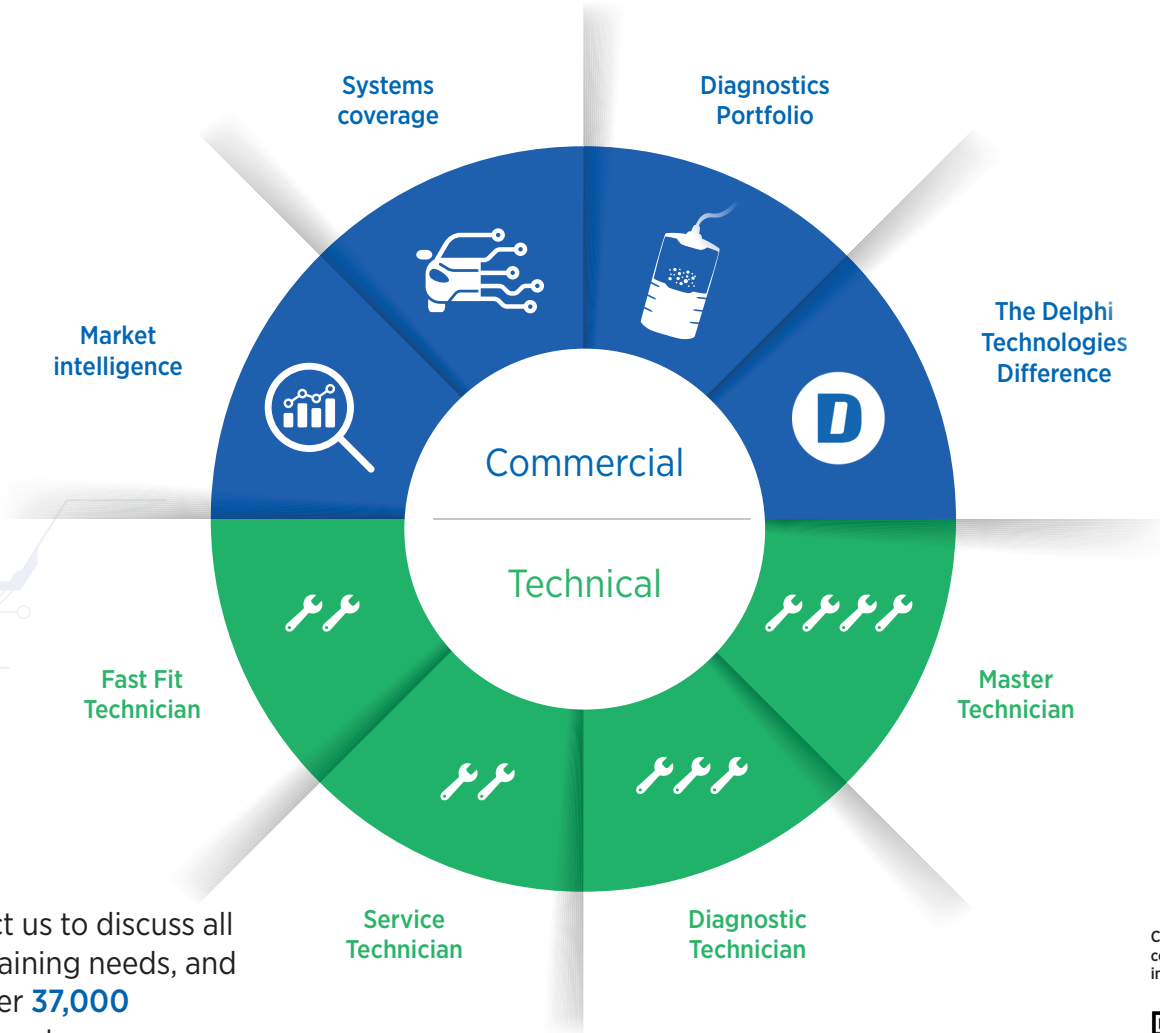


Adjustable wheel clamps with self-centering systems
whatever your requirement, we've got it covered



Training by the OE experts

Learn to earn with Delphi Technologies



Contact us to discuss all your training needs, and join over **37,000** participants per year already **learning to earn with Delphi Technologies.**

Click or scan this code for more information



Delphi Technologies

BorgWarner Technologies Limited

Brunel Way

Stroudwater Business Park

Stonehouse

Gloucestershire

United Kingdom

GL10 3SX

Find out more at:

delphiaftermarket.com



delphiaftermarket.com



Delphi Technologies is a brand of BorgWarner Inc.

© BorgWarner Inc. All rights reserved. The data and illustrations are not binding.
We reserve the right to modify the contents of this document on the basis of
development of the products, without prior notice.

