

Delphi
Technologies

Fuel systems
to power your
business

Pioneering product portfolio

Gasoline Fuel Systems



Steering and Suspension



Training and Technical Support



Diesel Fuel Systems



Vehicle Electronics and Engine Management



Gasoline Fuel Systems

Aftermarket full service solution



**In-depth
training**



**Technical
service**

Delphi Technologies full service solution

**Cataloging
& market
intelligence**



**Pioneering
product
portfolio**



Delphi Technologies fuel pumps & modules

A brief history



The mechanical era begins

Began manufacturing “screw-tight” mechanical fuel pumps.



1930's



Unitec unveiled

Industry moved from “screw-tight” mechanical pumps to Unitec pumps. The first Unitec units were produced in Flint, Michigan.

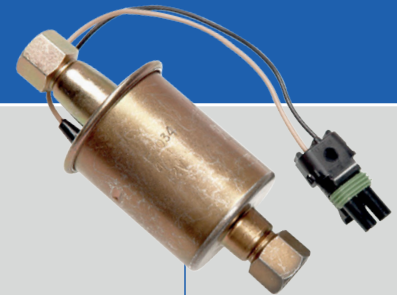


1970's



In-Line solenoid fuel pumps

Solenoid pumps were developed to accommodate some carbureted vehicles from the late 1960's and early 1970's.



late-1970's

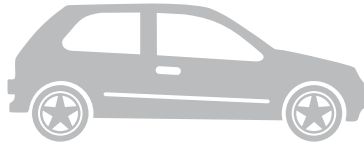


Fuel pumps “go electric”

Increasingly stringent emissions regulations, required VM's to utilize fuel injection systems. Electric fuel pumps were developed to handle higher pressure requirements.



1980's



Small cars big changes

In 1992, vehicle manufacturers moved to one unit replacement fuel modules, and Delphi Technologies lead the way, introducing fuel modules into new GM small cars.



1990's



New patented & improved design

Using 80+ years OE engineering expertise to deliver the highest performance in the aftermarket: long lasting, reduced wear & corrosion resistance.



2020

Fuel pumps & modules

The Delphi Technologies difference

Integrated **OE** expertise

Delphi Technologies applies OE expertise and pioneering technology to every fuel pump and module.



30+ OE-proprietary innovations and **150** patents

Leading **vehicle** coverage

Delphi Technologies is a leading Tier 1 supplier to the top 25 global vehicle manufacturers.



Over 99% coverage in North America

Expert **technical** support

Delphi Technologies offers expert-led training programs and tech hotline to ASE Master Technicians and OEM experts.

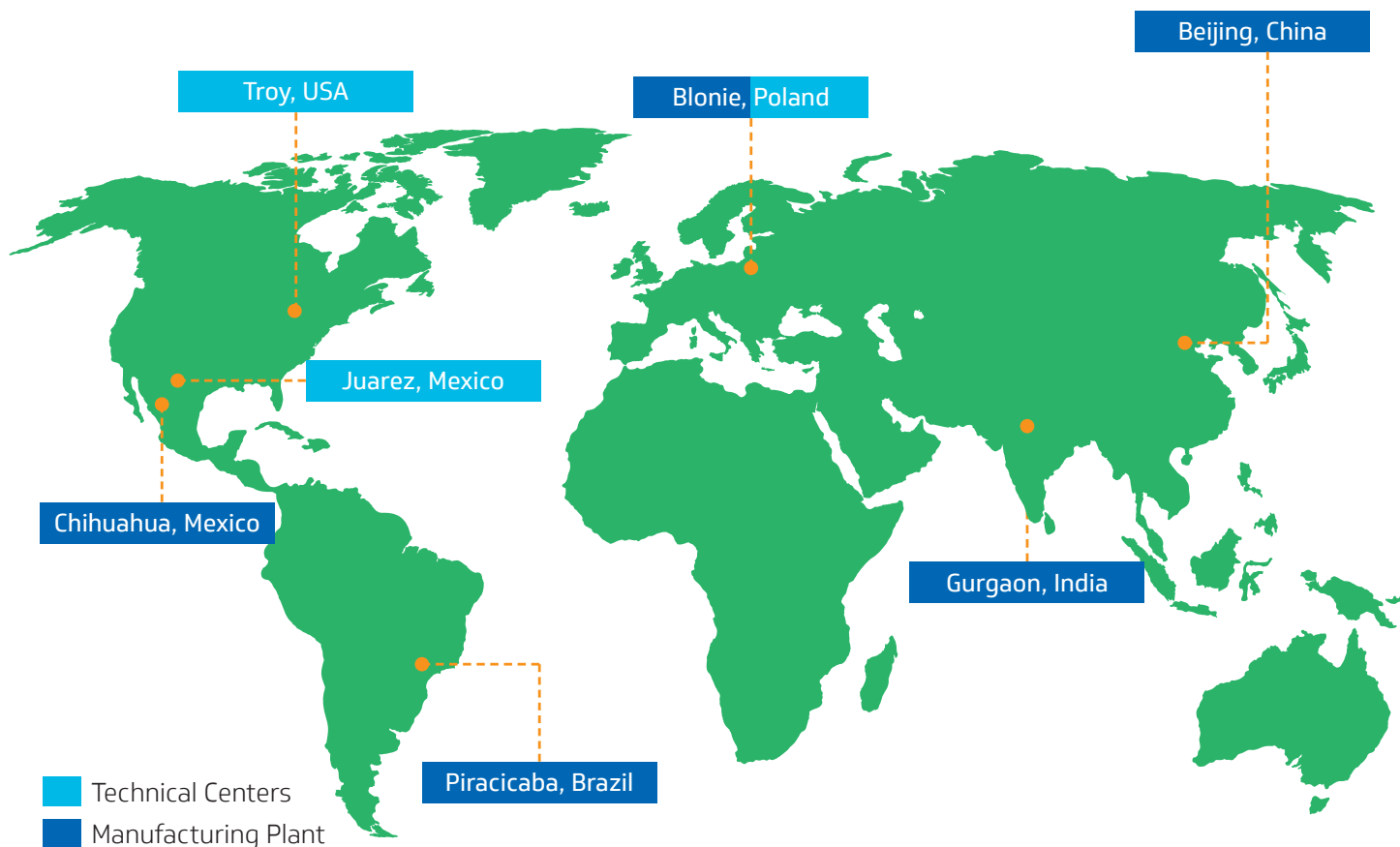


100 years combined trainer experience



Integrated OE expertise

Global manufacturing footprint



With a global technical center and manufacturing footprint, Delphi Technologies is well positioned to serve its growing OE and independent aftermarket customer base with high performance fuel pumps and modules.

Delphi Technologies ... a global manufacturer, serving local needs.

Distinctly Delphi Fuel Pumps

Fuel technology you can rely on



Anodized aluminum can reduce flow loss by **up to 100%** in severe contamination



New carbon commutator extends pump life by **up to 300%** over commonly used copper, by reducing oxidation and premature wear*



Over-molded armature protects pump windings in corrosive environments



Button style contacts feature additional wear material that can **last for over 1 million cycles**



High capacity synthetic mesh is able to filter out all items **larger than 30 microns**

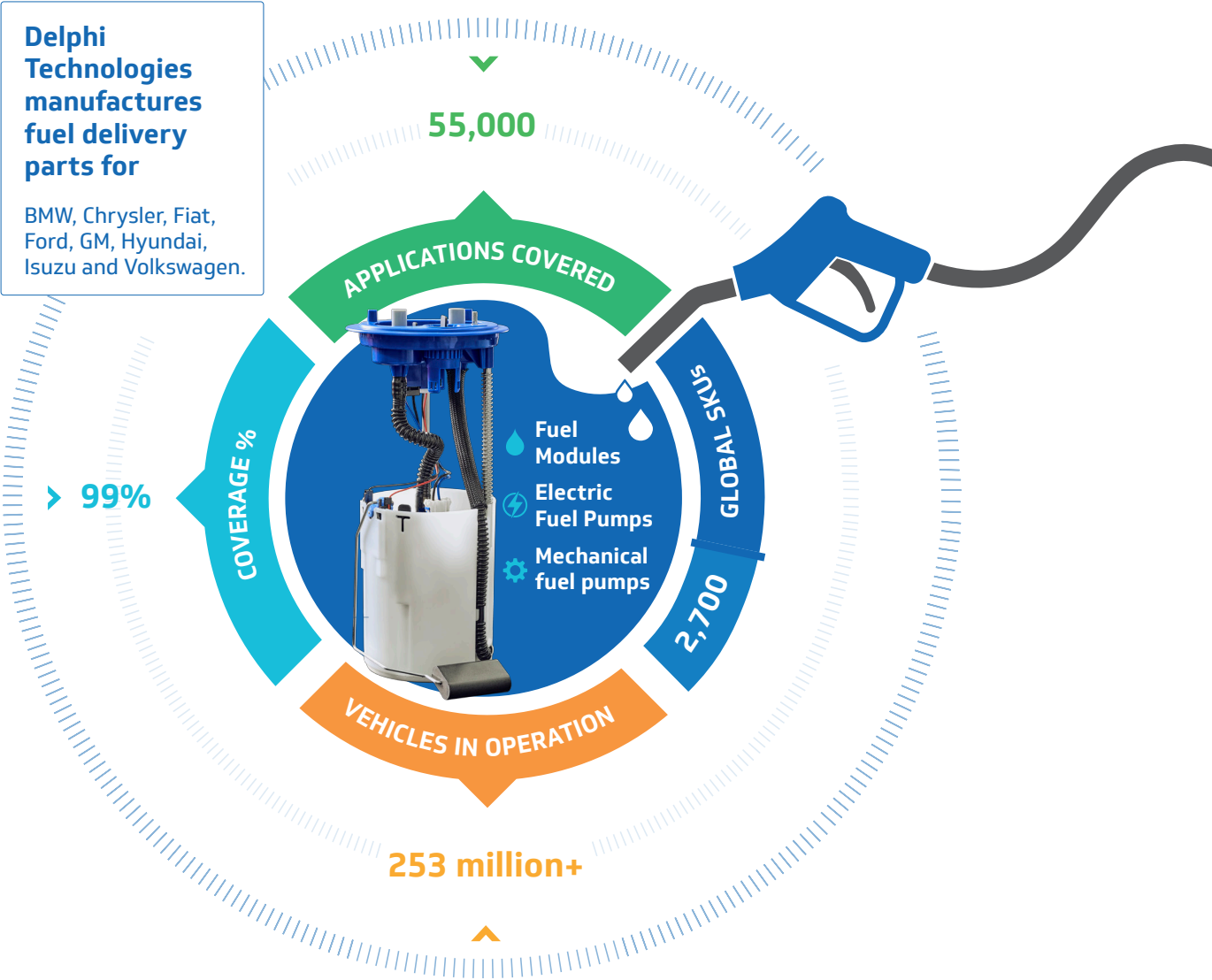


Distinctly Delphi with **electric blue** fuel pump top, module top cover, and strainer material

*In contaminated fuel or fuel with alcohol blends

Leading vehicle coverage

Over 200 million ways to fuel your business



Training & technical support Straight from the OE experts

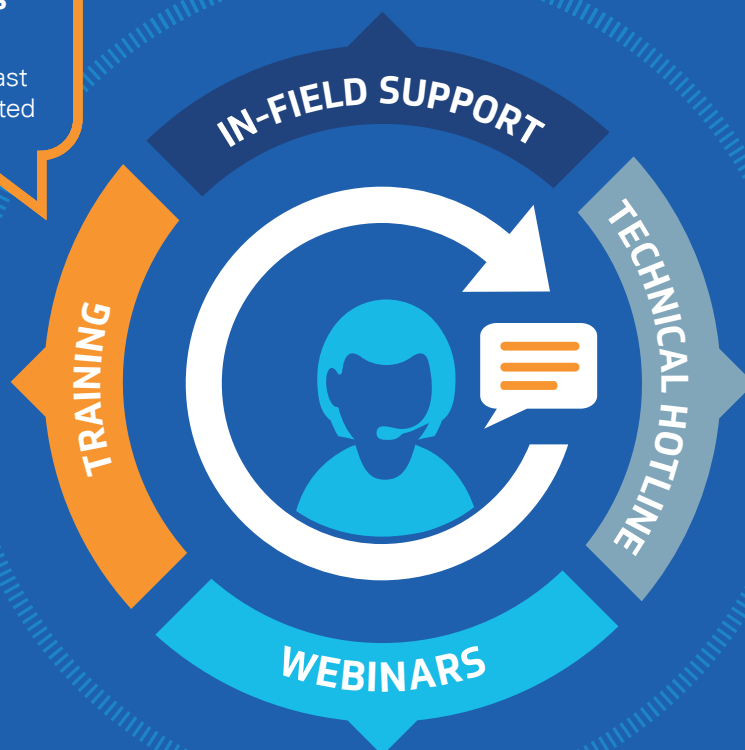
We offer 10 gasoline powertrain classes

- 45 out of over 100 classes delivered last year were fuel related



Full service solution

- Expert-led training programs
- Tech hotline to ASE Master technicians and OEM experts
- Webinars
- Online resource center for technical information



Every year our
OE experts:



ANSWER OVER
8,000
HOTLINE CALLS



DELIVER OVER
+100
EXPERT-LED
COURSES



TRAIN OVER
3,000
TECHNICIANS
& CUSTOMERS

Clean the tank before you replace

10 steps to properly clean your fuel tank

The original pump went into a clean tank. To ensure the same level of performance, the new pump should go into a clean tank too.

1



DRAIN FUEL TANK INTO AN APPROVED CONTAINER.

2



CLEAN RUST AND DEBRIS FROM THE TOP OF THE FUEL TANK

3



REMOVE FUEL PUMP

4



SWIRL GAS TANK. POUR OUT REMAINING GAS AND DEBRIS

5



CLEAN THE TANK INTERIOR WITH A LOW-SUDS SOAP AND WATER MIXTURE *

6



SWIRL CLEANING SOLUTION INSIDE TANK

7



DRAIN TANK AND DRY WITH COMPRESSED AIR AND / OR A LINT-FREE CLOTH

8



VISUALLY INSPECT TANK
REPLACE TANK IF DAMAGED

9



CONFIRM TANK IS COMPLETELY DRY
(MAY TAKE APPROXIMATELY 30 MINUTES)

10



RE-FILL TANK WITH FRESH FUEL



*For your convenience, we sell a **Fuel Tank Cleaning Kit (FC01)**.

For a video demonstration, follow the QR code:
Or go to [youtube.com/DelphiAutoParts](https://www.youtube.com/DelphiAutoParts)

Before you clean, think safety first:

Wear safety glasses and gloves
Have a fire extinguisher handy





For more information visit

delphiaftermarket.com



Click or scan the code below:

