



# Delphi Service Centre Emissions



Changing emissions legislation is driving future technologies. As more stringent laws are passed, regular emissions servicing will not be optional, it will be required.

To take advantage of this service opportunity, you will need specialist expertise in diagnosing and servicing to the latest emissions standard. Delphi can provide all the tools and training you need to become the emissions service expert.

## **Our OE Intelligence**

In helping Original Equipment (OE) manufacturers meet strict European emissions standards for today and tomorrow, Delphi has leveraged its vehicle systems development expertise to develop a "one-stop-shop" for emissions diagnosis and repair in the aftermarket.

This expertise allows us to offer a broad OE and aftermarket solution including:

- > Diesel Particulate Filters (DPF) and fitting kits
- > Remanufactured turbochargers
- > Exhaust Gas Recirculation (EGR) valves
- > Selective Catalytic Reduction (SCR) systems
- > Additives, sensors
- ...and much more

Delphi's entire range of emissions products is manufactured to OE-matching quality.

**Are you ready? Delphi is!**



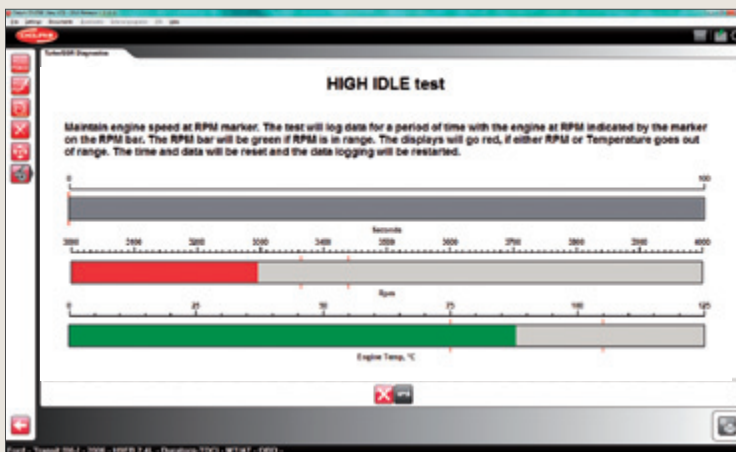
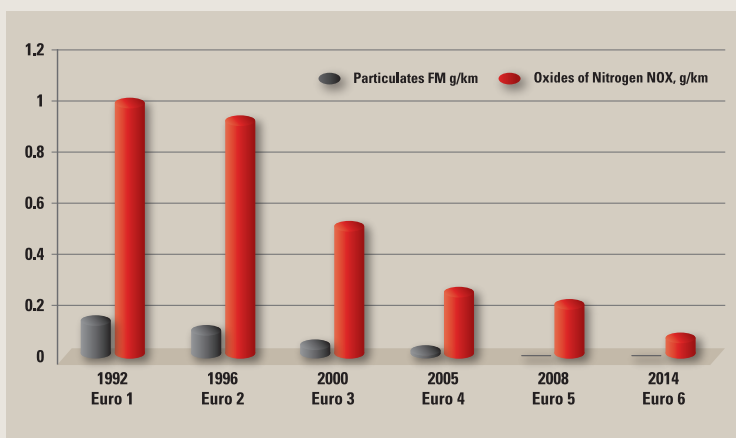
## Euro 5, Euro 6 and Beyond

As the European Commission (EC) heightens its focus on vehicle emissions by proposing a 30% reduction in fleet-wide, greenhouse-gas emissions by the end of this decade, Delphi is helping to prepare the aftermarket by launching an industry-first emissions module.

## Emissions Module

By joining our Delphi Service Centre Emissions programme, you will gain the technology, know-how and support needed to accurately diagnose and repair emission-sensitive technologies quickly, efficiently and profitably, including:

- OE-level training courses:
  - > DPF
  - > SCR
  - > Turbocharger diagnostics
- Delphi DS Tool with advanced vehicle emissions diagnostics:
  - > Regenerate DPF
  - > Reset DPF data and pressure sensors
  - > EGR valve reset
  - > Turbocharger diagnostic software
- Specialist tooling including:
  - > Delphi Fuel Analyser
  - > 4-Gas Analyser
  - > Smoke Tester, Minivac, Pico Scope
- Comprehensive technical support including access to our on-line information database and a technical hotline
- Access to our range of OE-quality parts including:
  - > DPF and fitting kits
  - > Remanufactured turbochargers
  - > EGR valves, SCR systems
  - > Additives and sensors



The Delphi Service Centre package is designed to provide everything you need to tap into this evolving market, now and in the future. As more vehicles are fitted with complex emissions systems, Delphi's tools and training can help you take full advantage of the expanding aftermarket.

**The right tools to help you do the right repairs for your customers!  
Join the Delphi Service Centre network today!**



**Interested?! You should be!  
Don't miss out on this exciting opportunity.**  
**Contact your Delphi representative or visit [delphi.com/am](http://delphi.com/am)  
for details on how to join the Delphi Service Centre network.**

